

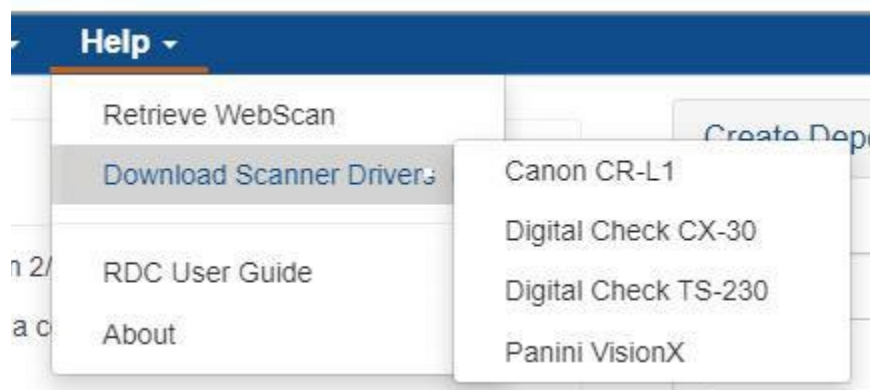
## Remote Deposit Scanner Installation (Panini Scanners)

### Introduction

Remote Deposit Capture users will need both WebScan and a scanner driver installed on the PC in order to successfully scan deposits. This serves as a guide to install both pieces.

**Prior to downloading anything, disconnect the scanner from the computer.**

Once logged in to the RDC site and the scanner is disconnected, navigate to the top left area of the screen and locate the **Help** dropdown.



### Webscan

Hover over **Help** and select **Retrieve WebScan**.

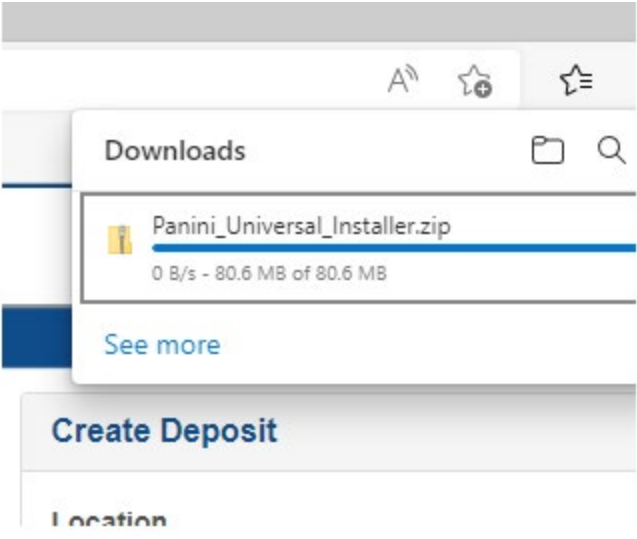
A pop-up will appear—click **Open File**.

Click Open File, and then the Wizard installer will appear. Click **Next** until the end and then select Close or Finish.

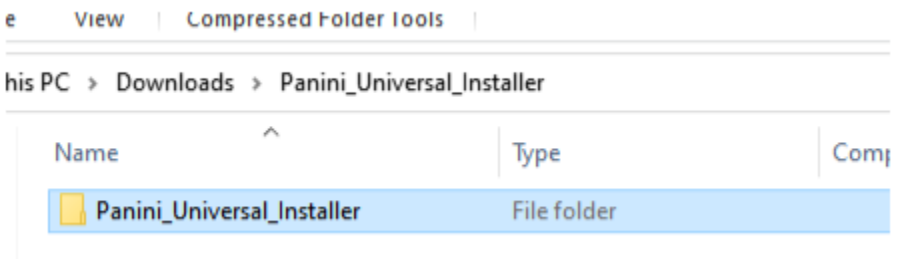
### Scanner Driver Installation - Panini

Hover over **Help** and select **Download Scanner Drivers**, then select **the scanner model you have** (Panini Vision X, Panini iDeal, etc.)

A download will pop up in the upper right-hand corner of the browser.



Once you have clicked on the above folder, a window will open showing a folder named “Panini Universal Installer”



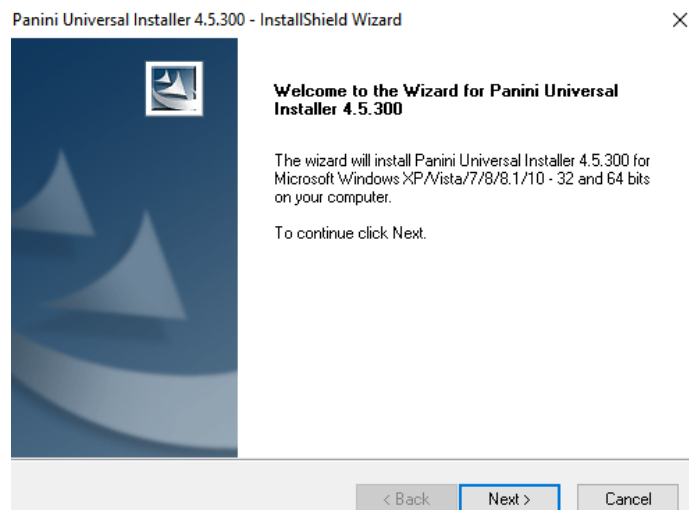
A window will appear with multiple folders to choose from. Select the highlighted option below “**setup – Application**”

> This PC > Downloads > Panini\_Universal\_Installer > Panini\_Universal\_Installer

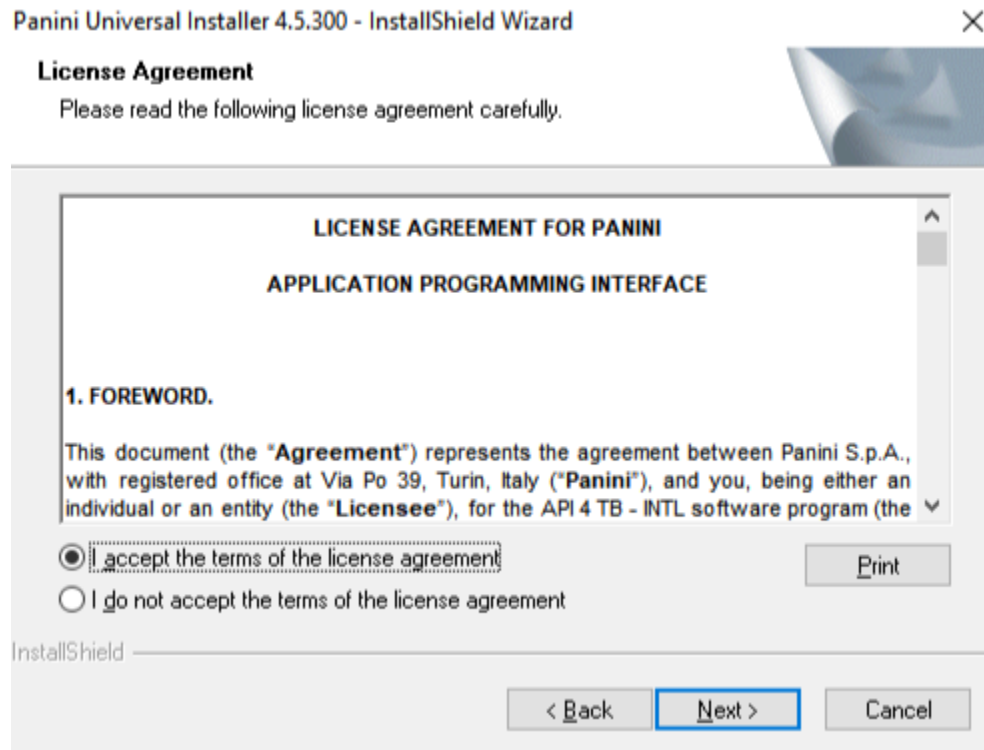
Name	Type	Compressed size	Password ...	Size
IDEngine	File folder			
MultiDemo	File folder			
PaniniArmaOCR	File folder			
PaniniUpd	File folder			
USB Driver 32	File folder			
USB Driver 64	File folder			
VisionAPI	File folder			
VXA4Engine	File folder			
VXEngine	File folder			
WIEngine	File folder			
X2Engine	File folder			
0x0409	Configuration settings	5 KB	No	
data1	Cabinet File	4,539 KB	No	
data1.hdr	HDR File	30 KB	No	
data2	Cabinet File	1,661 KB	No	
ISSetup.dll	Application extension	526 KB	No	
layout.bin	BIN File	5 KB	No	
ReleaseNotes	Text Document	14 KB	No	
Setup	Windows Batch File	1 KB	No	
Setup	BMP File	6 KB	No	
setup	Application	332 KB	No	
setup	Configuration settings	1 KB	No	
setup.inx	INX File	231 KB	No	
Setup_VisionX_Only	Windows Batch File	1 KB	No	
Setup_VisionX_Plus_Demo	Windows Batch File	1 KB	No	
VAniFI II	Rich Text Format	16 KB	No	

Once this folder is opened, it may ask if you want to allow the program to make changes to your device. Select **Yes**.

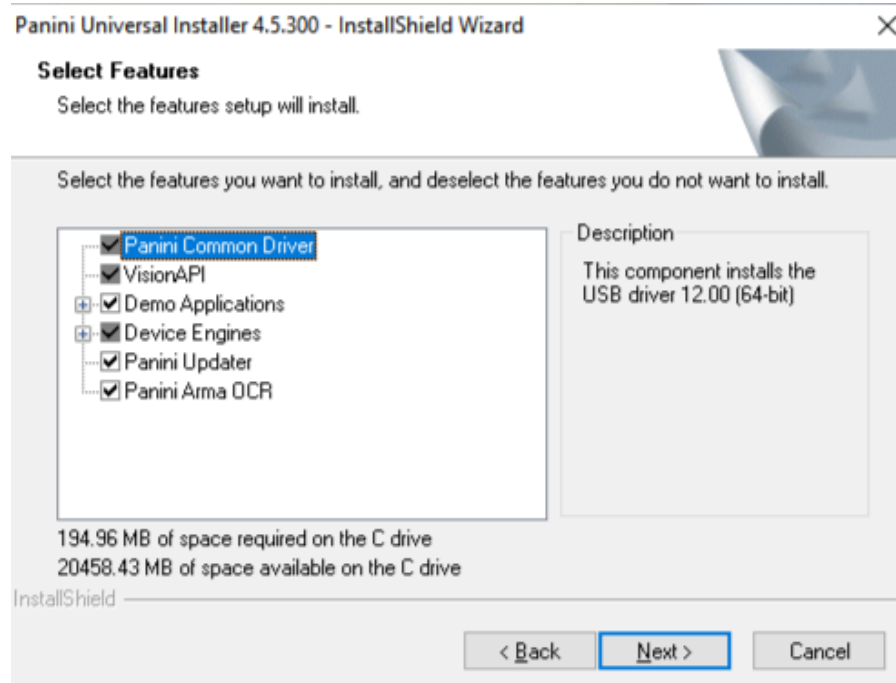
Once you have selected Yes, the following Wizard will appear on your screen. Select **Next**.



After selecting Next, a license agreement asks to accept the terms. Choose the bubble to accept and then proceed to click **Next** again.



Continue to select Next. At the Select Features box, all features should be automatically checked. Leave them all checked and then choose Next.



Continue to choose next until Finished.

**Once both installations are complete, reconnect the scanner to the computer.**

## Supported Systems and Browsers

### **Systems:**

Apple macOS 12 Monterey or newer

Microsoft Windows 8.1

Microsoft Windows 10

Microsoft Windows 11

### **Browsers:**

Microsoft Edge

Apple Safari (except on Windows)

## Assistance

For assistance, contact Remote Deposit Capture support at 281-269-7165 or email [remote.capture@prosperitybankusa.com](mailto:remote.capture@prosperitybankusa.com)